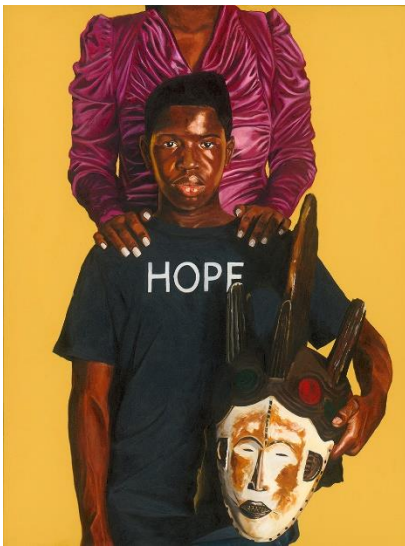




Winter 2023 School Tour Curriculum

Highlighting Contemporary Art in Georgia: Picture This Haley Gallery | December 22 2022 – April 1 2023



Fahamu Pecou
Quiet Power
acrylic on canvas
Collection of the Atlanta Chapter
of Jack and Jill of America, Inc.

“Highlighting Contemporary Art in Georgia” is one of a series of traveling exhibitions organized by the Georgia Museum of Art and the Lyndon House Arts Center that is dedicated to showcasing the talent and diversity of Georgia artists. This survey of work combines unique pieces and artists working with a variety of mediums and concepts. This program is supported in part by the W. Newton Morris Charitable Foundation, the Friends of the Georgia Museum of Art, and the Georgia Council for the Arts through the appropriations of the Georgia General Assembly.

“*Picture This*’, features a diverse group of artists experimenting in narrative painting. Each of their own stylistic interpretations, conceptual investigations, cultural messaging, and beauty are represented in this show...”
- Curator Didi Dunphy.

There are a number of artists in this exhibition whose work centers on cultural identity and human relationships. Artists have always explored the characteristics of personal and social identity in our day-to-day lives. How does the individual influence the whole, and vice versa? Art about identity serves an important role; it asks the viewer to question the systems and ideas around us that influence our perceptions, while also serving as a cathartic expression of something we all deal with, being human.



Bo Bartlett
Study for America, 2008.
oil on panel
Bo Bartlett Center

Globalrama | Works by Gregor Turk East Gallery | January 12 – April 1

Known for his public art installations, ceramic sculpture, photography, and mixed-media constructions, Gregor Turk often incorporates mapping imagery and cultural markings into his artwork. His response to his surroundings, whether in his hometown, Atlanta, or while traveling, serves as a major impetus for much of what he creates. Projects include producing a significant body of artwork resulting from hiking and biking the U.S./Canadian border, photographing blank billboards along Interstate 50, and making rubbings from text and imagery from the historical plaques and markers found in American cities.

“Through my art, I tend to focus on the fundamental qualities of mapping— the mysteriousness, inherent biases, cultural authoritativeness, and ability to simultaneously represent and distort reality.” - Gregor Turk



Gregor Turk
Choke II: Grid of 25, ceramic,
14 x 14 x 3 inches each

GADoE standards to be met though these exhibitions:

The relationship of these exhibitions to English/Language Arts, Visual Arts, and Social Studies are presented in Georgia’s Standards of Excellence. Particularly in understanding mapping, indigenous cultures in Georgia, and the geography of Georgia. These exhibitions also give students the opportunity to grow an appreciation and understanding of various painting styles and sculptural work, explore the impact geography has on individual cultures, explore Identity of self in relation to one’s surroundings, gain critical thinking skills, and visual critique and literacy. **Trips can be customized for all ages and grade levels, interests, and/or class subjects. For grade specific standards for these exhibitions, please contact the Director of Education and Public Programming.**

Pre-Visit Activity (Middle - College)

Students are encouraged to review our Gallery Guide before arrival to the Albany Museum of Art. They will get a glimpse of the works they will discover in our galleries. This guide will be shared with you along with this document, or you may request printed copies from the AMA to be picked up at our front desk.

We also ask that you discuss basic museum etiquette with your students ahead of arrival, i.e., looking with our eyes (not our hands), walking (not running), and using a low speaking voice in the galleries.

Field Trip Activities (Middle - College)

- Students will be introduced to the role of museums in our community and why they are so important to us.
- They will then be shown a few key works from *Picture This* in the Haley Gallery, as well as works by Gergor Turk in the East Gallery. While examining these works, we will discuss concepts of self-identity, cultural identity, Indigenous Georgia cultures, and Georgia geography. We will discuss the impact geography has on cultures.
- Students will be encouraged to speak as a group, read wall labels aloud, and engage in analytical conversation with educators and peers. They may also be asked to participate in a writing exercise.
- Students will discuss concepts of identity and societal expectations that come along with how we present ourselves.
- The guide will help the students with visual thinking strategies so that they may understand what the works are and why they were created.
- Students will create a work of art in the AMA classroom in response to the works in the galleries.